

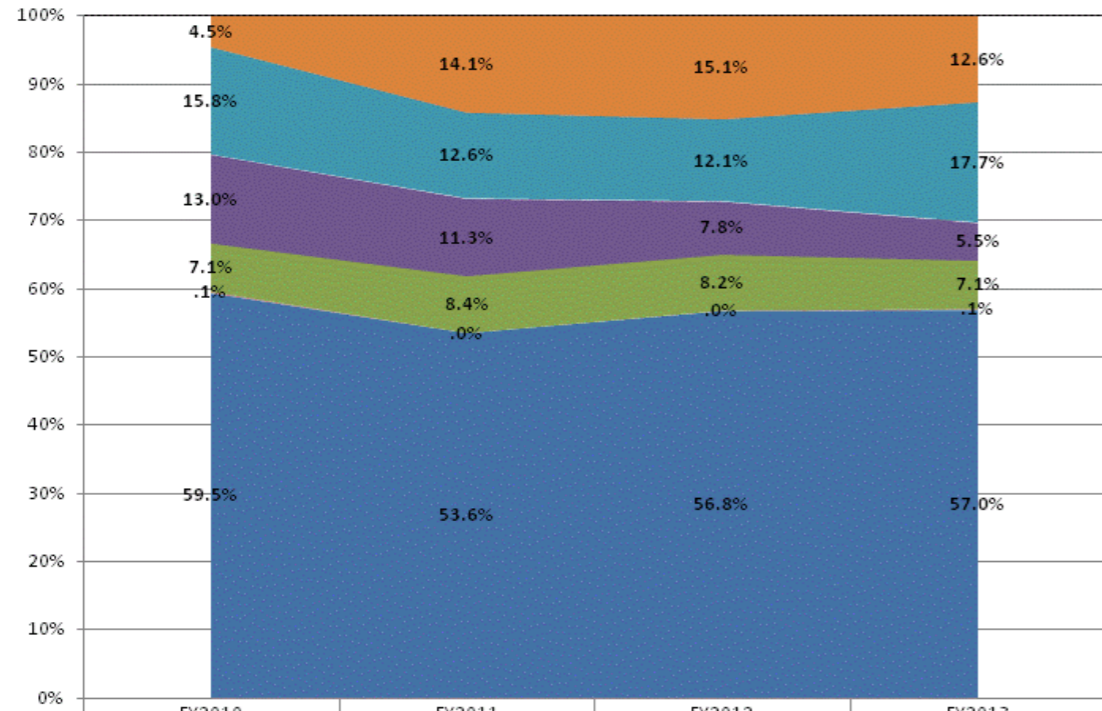
**School Corporation Expenditures by Expenditure Type
Biannual Financial Report Data July 2012 - June 2013
Cannelton City Schools (6340)**

Cannelton City Schools (6340)

	FY 2006	FY06 % of Total Exp	FY 2009	FY09 % of Total Exp	FY 2012	FY12 % of Total Exp	FY 2013	FY13 % of Total Exp
Student Academic Achievement	\$2,074,120	66.3%	\$1,532,841	61.9%	\$1,505,515	56.8%	\$1,441,617	57.0%
Student Instructional Support	\$223,073	7.1%	\$204,652	8.3%	\$218,758	8.3%	\$183,327	7.2%
Overhead and Operational	\$711,559	22.8%	\$683,179	27.6%	\$525,193	19.8%	\$587,412	23.2%
Nonoperational	\$118,550	3.8%	\$56,509	2.3%	\$399,270	15.1%	\$318,138	12.6%
Grand Total	\$3,127,302		\$2,477,182		\$2,648,737		\$2,530,494	

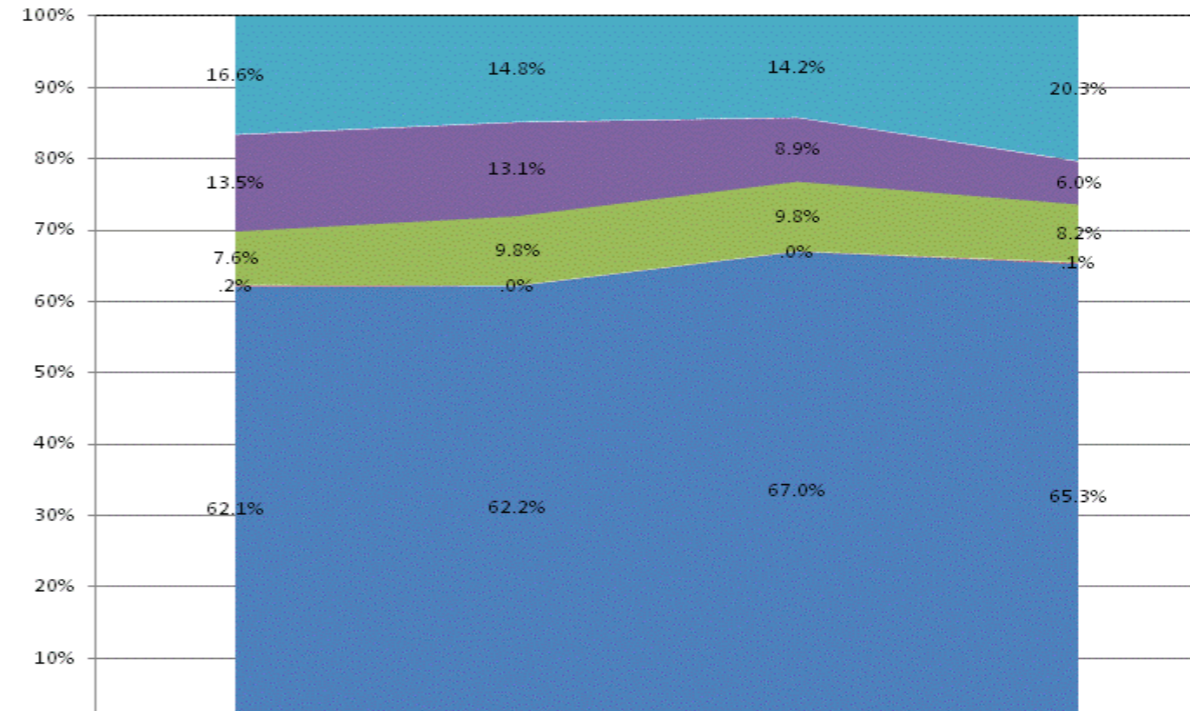
	FY 2006	FY 2009	FY 2012	FY 2013
Student Instructional Expenditures (Academic Achievement plus Support)	73.5%	70.1%	65.1%	64.2%

All Expenditures



	FY2010	FY2011	FY2012	FY2013
Non-Operational	4.5%	14.1%	15.1%	12.6%
Other Overhead and Operational	15.8%	12.6%	12.1%	17.7%
Corporation Administration	13.0%	11.3%	7.8%	5.5%
School Administration	7.1%	8.4%	8.2%	7.1%
Other Student Instructional Support	.1%	.0%	.0%	.1%
Student Academic Achievement	59.5%	53.6%	56.8%	57.0%

Operational Expenditures Only



	FY2010	FY2011	FY2012	FY2013
Other Overhead and Operational	16.6%	14.8%	14.2%	20.3%
Corporation Administration	13.5%	13.1%	8.9%	6.0%
School Administration	7.6%	9.8%	9.8%	8.2%
Other Student Instructional Support	.2%	.0%	.0%	.1%
Student Academic Achievement	62.1%	62.2%	67.0%	65.3%

School Corporation Expenditures by Expenditure Type
Biannual Financial Report Data July 2012 - June 2013
Cannelton City Schools (6340)

Account	FY 2006	FY 2009	FY 2012	FY 2013	Increase from FY 2006	Increase from FY 2009	Increase from previous year
Student Academic Achievement							
11050 Regular Programs; Full Day Kindergarten	\$0	\$0	\$0	\$32,770	N/A	N/A	N/A
11100 Regular Programs; Elementary	\$490,197	\$513,350	\$510,291	\$517,332	6%	1%	1%
11300 Regular Programs; High School	\$720,064	\$867,310	\$893,075	\$792,651	10%	-9%	-11%
11350 Regular Programs; High School; Academic Honors Diploma	\$0	\$0	\$0	\$8,104	N/A	N/A	N/A
11450 Vocational Education; Consumer and Homemaking	\$58,345	\$10,073	\$1,576	\$0	-100%	-100%	-100%
11520 Vocational Education; Area School Participation	\$0	\$2,801	\$32,272	\$0	N/A	-100%	-100%
11630 Regular Programs; Alternative Education Programs; High School	\$12,884	\$0	\$0	\$0	-100%	N/A	N/A
12110 Gifted And Talented; Gifted and Talented	\$350	\$600	\$0	\$0	-100%	-100%	N/A
12710 Equal Opportunity At Risk	-\$644	\$0	\$0	\$0	N/A	N/A	N/A
12810 Special Education Preschool	\$4,153	\$6,122	\$0	\$0	-100%	-100%	N/A
12900 Other Special Programs	\$102,389	\$107,513	\$62,409	\$58,301	-43%	-46%	-7%
13100 Adult/Continuing Education Programs; Adult Basic Education	\$0	\$0	\$127	\$2,945	N/A	N/A	> 500%
14100 Summer School Programs; Elementary	\$0	\$0	\$0	\$2,322	N/A	N/A	N/A
14300 Summer School Programs; High School	\$0	\$3,371	\$0	\$0	N/A	-100%	N/A
16200 Preventive Remediation	\$3,277	\$0	\$0	\$0	-100%	N/A	N/A
17400 Payments to Other Governmental Units Within State; Joint Services and Supply; Speci	\$46,600	\$13,737	\$0	\$25,456	-45%	85%	N/A
22120 Improvement of Instruction; Instruction and Curriculum Development	\$2,621	\$6,415	\$4,750	\$78	-97%	-99%	-98%
22130 Improvement of Instruction; Instructional Staff Training	\$165,042	\$1,223	\$638	\$1,300	-99%	6%	104%
22220 Library/Media Services; School Library	\$0	\$0	\$0	\$0	N/A	N/A	N/A
22310 Instruction, Related Technology; Technology Service Supervision and Administration	\$18,218	\$0	\$0	\$0	-100%	N/A	N/A
22360 Instruction, Related Technology; Network Support	\$7,904	\$0	\$0	\$0	-100%	N/A	N/A
25540 Textbooks for Rent or Resale; Other Textbook Rental Service	\$350	\$175	\$377	\$358	2%	105%	-5%
25560 Textbooks for Rent or Resale; Textbooks and Workbooks	\$214	\$0	\$0	\$0	-100%	N/A	N/A
25570 Textbooks for Rent or Resale; Materials and Supplies	\$0	\$151	\$0	\$0	N/A	-100%	N/A
26497 2007 Account Code - Teachers Retirement Fund	\$86,588	\$0	\$0	\$0	N/A	N/A	N/A
Student Academic Achievement Total	\$1,718,555	\$1,532,841	\$1,505,515	\$1,441,617	-16%	-6%	-4%
Student Instructional Support							
21210 Guidance Services; Service Area Direction	\$0	\$5,862	\$0	\$2,812	N/A	-52%	N/A
21220 Guidance Services; Counseling Services	\$48,452	\$5,833	\$300	\$0	-100%	-100%	-100%
21310 Health Services; Service Area Direction	\$0	\$0	\$0	\$50	N/A	N/A	N/A
21340 Health Services; Nurse Services	\$2,956	\$2,031	\$280	\$0	-100%	-100%	-100%
21390 Health Services; Other Health Services	\$0	\$925	\$0	\$0	N/A	-100%	N/A
21410 Psychological Services; Service Area Direction	\$2,652	\$0	\$0	\$0	-100%	N/A	N/A
24100 Office of The Principal	\$117,406	\$190,001	\$218,179	\$180,465	54%	-5%	-17%
Student Instructional Support Total	\$171,466	\$204,652	\$218,758	\$183,327	7%	-10%	-16%
Overhead and Operational							
23110 Board of Education; Service Area Direction	\$12,812	\$14,740	\$8,540	\$17,700	38%	20%	107%
23150 Board of Education; Legal Services	\$6,492	-\$13,208	\$16,027	\$5,135	-21%	N/A	-68%
23160 Board of Education; Promotion Expenses	\$1,996	\$491	\$0	\$1,000	-50%	104%	N/A
23210 Executive Administration; Office of The Superintendent	\$238,321	\$206,950	\$117,309	\$107,657	-55%	-48%	-8%
23290 Executive Administration; Other Executive Administration Services	\$3,731	\$2,888	\$1,838	\$1,430	-62%	-50%	-22%
25150 Fiscal Services; Payroll Services	\$678	\$0	\$0	\$0	-100%	N/A	N/A
25195 Other Fiscal Services; Bank Account Service Charge	\$351	\$278	\$4,103	\$2,000	470%	> 500%	-51%
25199 Other Fiscal Services; Other	\$70	\$5,853	\$282	\$0	-100%	-100%	-100%
25600 Public Information Services	\$0	\$995	\$580	\$3,625	N/A	264%	> 500%
25720 Personnel Services; Recruitment and Placement	\$0	\$0	\$0	\$0	N/A	N/A	N/A
25730 Personnel Services; Personnel Services	\$0	\$94,070	\$57,222	\$1,100	N/A	-99%	-98%

School Corporation Expenditures by Expenditure Type
Biannual Financial Report Data July 2012 - June 2013
Cannelton City Schools (6340)

Account	FY 2006	FY 2009	FY 2012	FY 2013	Increase from FY 2006	Increase from FY 2009	Increase from previous year
25790 Personnel Services; Other Professional Services	\$0	\$0	\$0	\$0	N/A	N/A	N/A
26100 Operation and Maintenance of Plant Services; Service Area Direction	\$396	\$0	\$0	\$0	-100%	N/A	N/A
26200 Operation and Maintenance of Plant Services; Maintenance of Buildings	\$213,881	\$221,251	\$159,397	\$174,722	-18%	-21%	10%
26300 Operation and Maintenance of Plant Services; Maintenance of Grounds	\$226	\$19,660	\$0	\$0	-100%	-100%	N/A
26400 Operation and Maintenance of Plant Services; Maintenance of Equipment	\$11,908	\$9,418	\$14,225	\$61,123	413%	> 500%	330%
26499 2007 Account Code - Other	\$11,296	\$0	\$0	\$0	N/A	N/A	N/A
26500 Operation and Maintenance of Plant Services; Vehicle Maintenance (not buses)	\$2,804	\$6,010	\$7,562	\$10,373	270%	73%	37%
26700 Operation and Maintenance of Plant Services; Insurance	\$41,100	\$1,145	\$46,014	\$50,715	23%	> 500%	10%
27100 Student Transportation; Vehicle Operation	\$6,675	\$0	\$0	\$10,525	58%	N/A	N/A
27300 Student Transportation; Vehicle Servicing and Maintenance	\$0	\$251	\$0	\$0	N/A	-100%	N/A
27400 Student Transportation; Purchase of School Buses	\$9,300	\$3,000	\$0	\$0	-100%	-100%	N/A
27500 Student Transportation; Insurance on Buses	\$0	\$0	\$2,016	\$0	N/A	N/A	-100%
27900 Student Transportation; Other Student Transportation Services	\$83	\$0	\$0	\$0	-100%	N/A	N/A
27910 Student Transportation; Bus Driver Training	\$0	\$0	\$0	\$100	N/A	N/A	N/A
31100 Food Services Operations; Service Area Direction	\$0	\$25	\$96	\$0	N/A	-100%	-100%
31200 Food Services Operations; Food Preparation and Dispensing	\$37,696	\$51,590	\$43,437	\$74,847	99%	45%	72%
31400 Food Services Operations; Food Purchases	\$0	\$151	\$7,500	\$0	N/A	-100%	-100%
31500 Food Services Operations; Distribution of School Lunch Reimbursements	\$16,000	\$0	\$0	\$0	-100%	N/A	N/A
31900 Other Food Services	\$7,000	\$57,623	\$39,046	\$65,359	> 500%	13%	67%
Overhead and Operational Total	\$622,814	\$683,179	\$525,193	\$587,412	-6%	-14%	12%
Nonoperational							
33200 Community Recreation	\$2,426	\$0	\$0	\$0	-100%	N/A	N/A
33400 Athletic Coaches	\$19,644	\$27,903	\$29,493	\$29,642	51%	6%	1%
33990 Other Community Services; Other	\$828	\$0	\$0	\$1,636	98%	N/A	N/A
45100 Building Acquisition, Construction and Improvements	\$3,375	\$0	\$0	\$0	-100%	N/A	N/A
45500 Facilities Acquisition and Construction; Rent of Buildings, Facilities, and Equipment	\$24,200	\$12,000	\$9,075	\$12,100	-50%	1%	33%
46000 Facilities Acquisition and Construction; Purchase of Moveable Equipment	\$1,339	\$0	\$0	\$0	-100%	N/A	N/A
47000 Facilities Acquisition and Construction; Purchase of Mobile or Fixed Equipment	\$20,984	\$3,350	\$0	\$0	-100%	-100%	N/A
51400 Debt Services; Principal on Debt; School Bus Loans	\$0	\$0	\$0	\$17,400	N/A	N/A	N/A
51500 Debt Services; Principal on Debt; Bond Anticipation Notes	\$0	\$0	\$302,272	\$252,022	N/A	N/A	-17%
52100 Debt Services; Interest on Debt; Bonds	\$0	\$0	\$27,724	\$0	N/A	N/A	-100%
52200 Debt Services; Interest on Debt; Temporary Loans	\$32,172	\$13,256	\$30,706	\$3,255	-90%	-75%	-89%
52400 Debt Services; Interest on Debt; School Bus Loans	\$0	\$0	\$0	\$2,082	N/A	N/A	N/A
53100 Debt Services; Lease Rental; Buildings ; Principal	\$6,750	\$0	\$0	\$0	-100%	N/A	N/A
Nonoperational Total	\$111,717	\$56,509	\$399,270	\$318,138	185%	463%	-20%
Prorated By Fund							
26491 2007 Account Code - PERF	\$13,231	\$0	\$0	\$0	N/A	N/A	N/A
26492 2007 Account Code - Social Security	\$145,730	\$0	\$0	\$0	N/A	N/A	N/A
26494 2007 Account Code - Group Insurance	\$314,138	\$0	\$0	\$0	N/A	N/A	N/A
26496 2007 Account Code - Unemployment Compensation	\$56	\$0	\$0	\$0	N/A	N/A	N/A
26498 2007 Account Code - Severance / Early Retirement Pay	\$29,595	\$0	\$0	\$0	N/A	N/A	N/A
Prorated By Fund Total	\$502,750	\$0	\$0	\$0	N/A	N/A	N/A